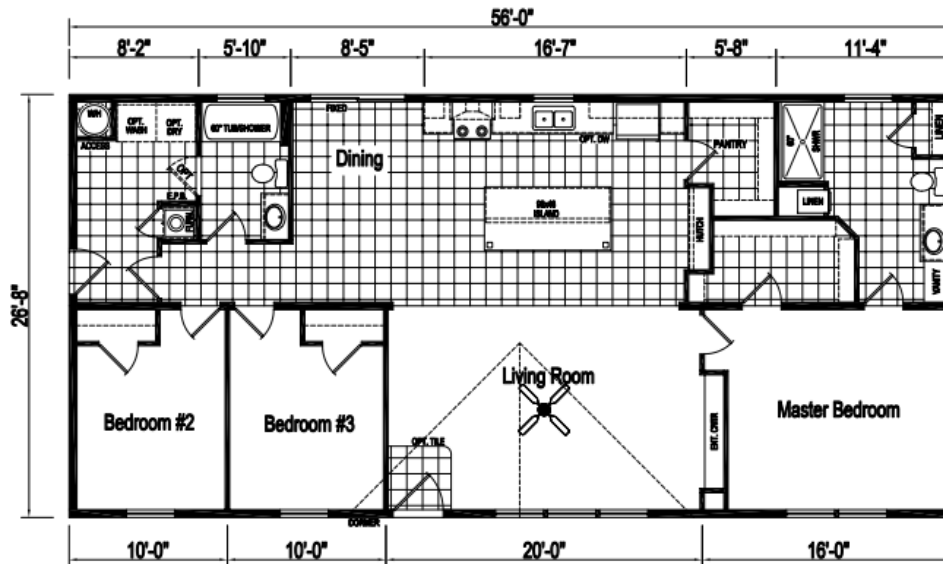


EAGLE RIVER CD-60J596-X
28X60(56) | 1,493 SQ FEET | 3 BEDROOM, 2 BATH



The Ultimate Home Value with Quality, Durability, and Flexibility in Design

Featuring:

- Deluxe Molding in Impact Areas
- Dormer
- Mid-zone snow load
- R-38 ceiling insulation
- 2X6 exterior walls with R-19 insulation
- Furnace stack extension
- Floor Mount Perimeter Heat Registers
- Sunburst front door
- 9-lite rear door
- Furnace door
- Window in Master Bath
- Extra Window in Living Room (for total of 3)
- Prep for Washer & Dryer
- (2) TV Jacks (1) Phone Jack
- Lighted Bath Fans in Both Baths
- Hardwood Cabinet Doors & Stiles
- China Bath Sinks
- Towel and Tissue Holders
- Walk-in Pantry
- Kitchen Island
- Laminate Backsplash
- Upgraded Carpet
- Vinyl Foyer
- Bedroom Ceiling Lights
- Ceiling fan w/switch in LR
- Ceramic Tile Backsplash Counter to Cabinet
- Ship lap Behind Entertainment Center
- Entertainment Center
- Deluxe Shutters Front Windows
- Accent Wall in Dining Room
- Accent Wall in Bedroom 3
- Smoke and CO 2 detectors to NYS Codes
- Sliding Patio Door
- Deluxe Porch Light at Front Door
- 40-gallon electric water heater IPO 30 gallon
- Water shut offs throughout
- Interior Whole house water shut off
- Exterior faucet (1)
- 1-piece fiberglass tub IPO standard tub
- 1-piece fiberglass Shower w/door IPO Standard Tub
- Stainless Steel Kitchen Sink
- Lined overhead kitchen cabinets
- Utility room vented shelf
- Cabinet over Refrigerator area
- Microwave Over Range
- Dishwasher
- Deluxe Chandelier
- (2) Stem Lights over Island
- Pot Filler Faucet Above Range
- Glass doors on overhead cab's each side of range

Home is shown with appliances that MAY NOT be available at time of order. If manufacturer is unable to supply an appliance, BHT will refund back what manufacturer paid for said appliance.

Due to constant product improvement, all prices & specifications are subject to change without notice or obligation.

Chesapeake Standard Features

Construction

- 2" x 6" Exterior Walls at 16" O.C.
- 2" x 6" Floor Joists at 16" O.C.
- #2 or Better Lumber (14' Wide)
- 2" x 8" Floor Joists at 16" O.C.
- #2 or Better Lumber (16' Wide)
- 5/8" Tongue/Grove O.S.B. Floor Decking
- Wind Zone 1 Construction
- Zone III Insulation (R12/R19/R22) (Thickness and R-values listed are certified by original manufacturer at time of installation, and may be reduced due to compression in floor, wall, and ceiling cavities)
- Removable Hitches
- 3/8" Fiberboard Backing
- Vinyl Siding / Shingle Roof
- Ridge Vent Construction with Fully Vented Eaves
- 8' Flat Textured Ceilings
- 3680 Fiberglass Front Door with Sunburst and Deadbolt Lock
- 3280 - 9 Lite Fiberglass Rear Door with Deadbolt Lock
- Thermal Windows with Grids
- Deluxe Raised Panel Shutters (Front Door Side on Doubles and Hitch End on Singles)
- Decorative Gypsum Interior Panels

Plumbing & Heating

- Ceramic Toilet Tank, 1.6 gal flush
- 60" Tub with Acrylic Surround
- Deep-Well Stainless-Steel White Kitchen Sink
- Cross-Handle Plumbing Fixtures
- Plumbing for Washer
- Water Shut-Off Valves
- Bath Vanity Mirrors
- 30 Gallon Water Heater / Dual Element with Overflow Drip Pan
- Electric Ignition Gas Furnace
- Furnace Door
- In-Floor Heat Duct Crossovers (Doubles)
- Center Seal at Mate Line (Doubles)

Appliances (if available)

- Gas Range
- 18 CUFT Refrigerator

Electric & Lighting

- 100 Amp Panel Box with 10-20 Breaker
- Lighted Bath Exhaust Fans, 50 CFM
- Wire and Vent for Dryer
- GFI at Kitchen Counters & Bath Vanities
- Patio Lights at Front and Rear Doors
- Exhaust Vent Fan with Light in Kitchen
- Frosted Glass Light Fixtures

Floor Coverings

- Linoleum Flooring: Kitchen & Baths
- 7/16" – 6 lb. Rebond Carpet Pad
- Level I Carpet (14' Wide)
- Carpet Bar at Transitions
- FHA Rated Carpet Available

Cabinets

- Wood Flat Panel Cabinet Doors with Hidden Hinges - *Available in Stratford Oak, Java & Gray Ash (Hickory & White Flat Panel, Raised Panel Cabinets available)*
- 3-Drawer Bank in Kitchen
- Drawer Bank in Master bath (if fits)
- 36" High Vanities
- Overhead Cabinet Top Trim
- Overhead Cabinets Lined with Center Shelf
- Metal Drawer Guides
- Utensil Separator in Kitchen Drawer
- Formica Brand Counter Tops
- Euro Style Cabinet Pulls
- Shelf over Refrigerator Area
- Center Base Shelves in Kitchen
- Euro Style Cabinet Pulls

Miscellaneous

- 1 1/2" Ceiling Molding
- Pre-Hung White 6 Panel Interior Passage Doors
- Satin Nickel Passage Doorknobs
- Vented Shelving throughout
- Shower Curtain in Tub Baths
- Color Coordinated Valence Drapery Package
- Mini blinds all Operating Windows
- Vented Shelving Throughout
- Towel & Tissue Holder in Bathrooms

Due to constant product improvement, all prices & specifications are subject to change without notice or obligation to Eagle River Homes. Dimensions are stated to industry standards. Width and length dimensions are nominal and not to be used for setup of home. The Square footage shown is nominal to exterior floor size.