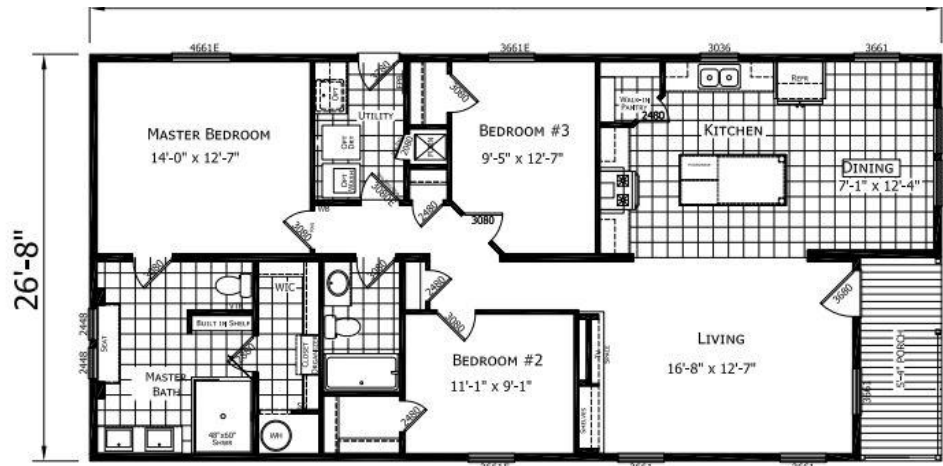


**Atlantic CATENA II 28x60(56) 1,493 Sq Ft**



- ½" Drywall Throughout Including Closets
- OSB Sidewall Sheathing with Wind Wrap
- OSB on Marriage Walls for Support
- Porch: PVC Posts & Railings
- Baseboard Molding
- Ceiling Cove Molding
- R-38 Ceiling Insulation
- Gas Furnace IPO Electric
- Furnace Stack Extension
- Perimeter Heat Ducts
- Honey Well Programmable Thermostat
- Towel bar and tissue holders
- Water Shut Offs At all Toilets and Sinks
- Exterior Water Faucet
- Vinyl Lineals at Door Side & 3 other windows
- Sunburst Front Door
- 9-Lite Rear Door
- Exterior Light at Front & Rear Door
- Ceramic Tile Shower with Rain Shower Head
- 1 Piece Fiberglass tub in the hall bath
- Porcelain Bath Sinks
- Bathroom Bench with Cubbies in Master Bath
- Bathroom Bench with Cubbies in Master Bath
- Guest Closet

Note: mini-blinds are shown in display but are no longer available due to builder supply shortage

- 50" Napoleon Fireplace
- Hickory Entertainment Center
- Metal Roof in Evergreen
- 40 Gallon Electric Water Heater
- 200 Amp Electrical Service
- Bedroom Ceiling Lights
- 4 Recessed Can Lights in Kitchen
- Paddle Fan with Light Kit in Living Room
- AC Ready (Conduit & Breaker)
- 1 Phone Jack & 1 TV Jack
- Vinyl Foyer
- Upgraded Carpet with #8lb Carpet Pad
- Mortised Hinges on Interior Doors
- Lever Locksets on Interior Doors
- Metal Louvered Furnace Door
- Deep Well 8" Stainless Steel Kitchen Sink
- UK2 Faucet (pull out spray faucet)
- Stainless Steel Appliances
- Utility Room Cabinet in Hickory
- Hickory Cabinets in Kitchen
- Hardwood Stiles on Cabinets
- Granite Countertops
- Island with built in Microwave in Island

*Due to continuous product development & improvement, prices, specifications & materials are subject to change w/out notice or obligation.*

# STANDARD FEATURES CTN.2-20

## CONSTRUCTION

- 2x6 Floor Joists 16" O.C.
- Tongue & Groove OSB Floor Decking
- 2x6 Sidewalls 16" O.C. | 2x3 Marriage Wall 24" O.C.
- 30 lb. Roof 24" O.C. with OSB Decking
- 8' Sidewalls | 3/12 Flat Stomped Ceiling with Finished Ceiling Joints Impact Area | Overhangs 6" Gable Ends & 6" Front/Rear
- Catena Elevation A - 2 Dormers
- Rolled Steel I-Beam | Recessed Frame | Removable Hitch
- Marriage Line Gasket | 1-Pc Soffit/Fascia
- Drywall Throughout Including Closets
- 2" Interior Molding | 1 3/4" Closet Molding | Door & Window Casing Trim Only Available in White
- Dutch Lap Exterior Vinyl Siding | Vinyl Corner Post
- Vinyl Lineals Doorside | Versatex Vinyl Door & Window Trim
- 25 Year 3 Tab Shingles with Ridge Vent
- Interior Accent Wall in Foyer and Dining Room

## ELECTRIC

- 200 Amp Electric Service
- GFIs in Kitchen & Baths
- LED Can Light at Kitchen Sink - Island - Pantry
- LED Can Lights in Kitchen
- LED Can Lights in Dining Room
- LED Can Lights in Master Bedroom - Master Bath - Master Bedroom Closet
- LED Can Lights in Utility Room
- LED Can Light in Foyer-Front Hall-Bedrooms-Hall Bath
- (2) 24x36 Mirror with LED Lights in Master Bathroom
- Switch Receptacle in Living Room
- Exterior GFI Receptacle
- Exterior White Coach Lights
- Wall Mount Dryer Receptacle
- Nest Thermostat
- Whole House Vent Fan

## PLUMBING & HEATING

- Inline Boots and Registers
- 15KW Electric Furnace
- 30 Gallon Electric Water Heater
- Whole House Shut-Off

*Due to continuous product development & improvement, prices, specifications & materials are subject to change with-out notice or obligation.*

## KITCHEN

- 8" SS Deep-Well Kitchen Sink | Single-Lever Faucet with Pull-out Spray Head
- SS Appliance Package (subject to change based on availability)
- Residential Drawer Guides
- Granite Countertops with 1 row Ceramic Backsplash | Ceramic Behind the Range
- Shaker Wood Cabinet Doors | Solid Wood Stiles | Hidden Hinges | 2" Flat Stile Bottom Overhead Cabinets
- Drawer Over Door Cabinet Construction (Full Extension Drawer Guides)
- Island with Granite Countertop
- Adjustable Shelves in Overhead Cabinets | Cabinet over Refrigerator with Shelves
- Walkin Pantry with 4 Wire Shelves

## BATHS

- Cabinet Doors with Solid Wood Stiles
- 60" 1-Piece Fiberglass Tub/Shower in Hall Bath
- 48x60 Agile Shower with Rain Drop Shower Head in Master Bath
- Single-Lever Anti-Scald Faucets
- Master Bath - Double Bowl Vanity | Rectangle Porcelain Sinks | Euro Radiant Faucets | Cultered Marble Countertop
- Hall Bath - Single Bowl Vanity with Mirror | Porcelain Sink | Laminate Countertop & Edge with 1 Row Ceramic Backsplash
- Towel Ring & Tissue Holders
- Power Lighted Vent Fans
- Bench with Cubbies in Master Bath
- Round China Toilet

## MISCELLANEOUS

- Combo Smoke/CO Detectors Per Code
- Carpet Pad | Shaw® Carpet - Living Room & Bedrooms
- Vinyl Flooring
- 2-Panel White Interior Doors with Lever Lock Sets | Mortised Hinges
- Vented Shelves in Closets & Washer/Dryer Area
- Vinyl Mini Blinds | Catena Drapes
- Insulation | R-19 Sidewall | R-30 Roof | R11 Floor
- Sunburst Fiberglass Front Door – No Storm
- 9-Lite Fiberglass Rear Door – No Storm
- Deadbolts on Exterior Doors | Keyed Alike
- Low-E Gridded Vinyl Windows & Screens
- Living Room Entertainment Center with 2 LED Can Lights, Barn Door & Electric Napoleon Fireplace