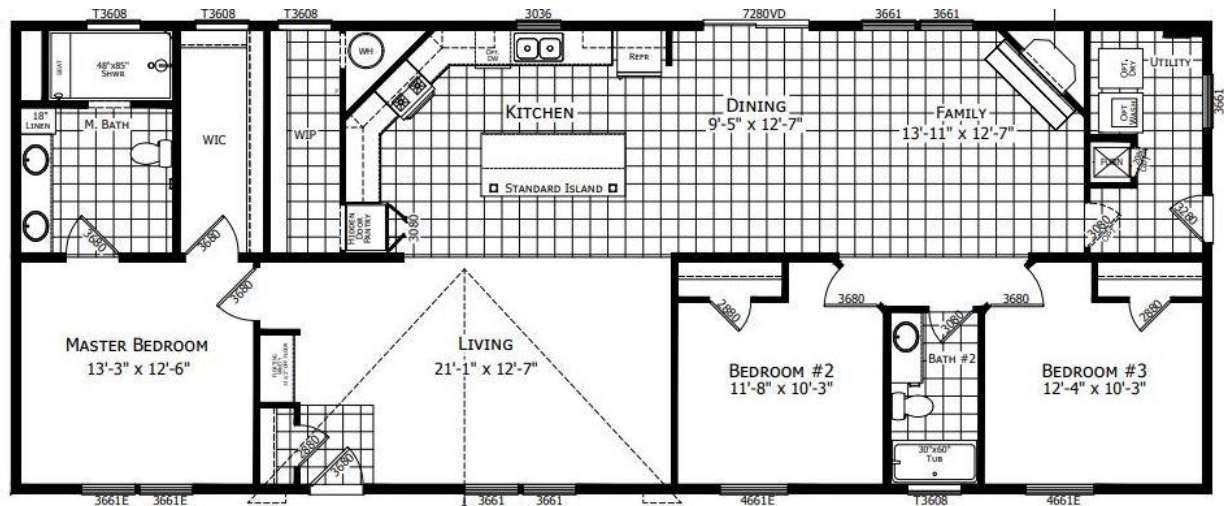


Atlantic 26402

28x72(68) | 1,813 Sq. Ft. | 3-bedroom 2-bath



Home featuring:

- Appliance Pkg.: SS Microwave & Dishwasher
- Gas Range and 18 CF Refrigerator
- Designer Square Backsplash behind the Range
- 72' (68) Option (shown above)
- 4" Recessed Frame
- Mid-Zone Snow Load (30#)
- Upgraded Molding in Living Areas
- 40 Gallon Electric Water Heater
- Water Shut Offs at all Toilets & Sinks
- Exterior Water Faucet
- Furnace Stack Extension
- Half Rock Wood Burning Fireplace
- 9-Lite Rear Door
- 2-Panel Arched top Interior Doors
- Thermal Pane Windows
- 4 Transom Windows
- 1 Phone and 3 TV Jacks
- 3 Extra Recessed Can Lights in Kitchen
- Can Light over Floating Cabinet
- Ceramic Tiled "Amazon" Shower includes Handheld Shower Head, Raindrop Shower Head & Shower Door
- 1 Piece Fiberglass Tub in the Hall Bath
- Stainless Steel Kitchen Sink
- Center Shelf in Kitchen Base Cabinets
- Linen Cabinet in Master Bath
- Mini-Blinds on Windows (pending availability)
- Tile Backsplash in Kitchen
- Plumbing for Ice Maker
- Feature Wall with Wood Wainscot in LR
- Perimeter Heat Ducts
- Exterior Sheathing
- Dormer
- 4" Massive Edge on Kitchen Island
- Whole House Water Shut Off
- Programmable Thermostat
- R-38 Ceiling Insulation
- Vinyl Foyer
- Sunburst Front Door
- Sliding Glass Patio Door IPO 1 Window in DR
- Furnace Door
- Window in Utility Room
- Receptacle over the Fireplace
- Can Lights in Bedrooms
- Paddle Fan with Light Kit in FR & LR
- 2 Black Cage Lights
- Porcelain Bath Sinks
- Elongated Toilets
- Towel Bar and Tissue Holders
- Wood Cabinet Doors and Stiles
- Pantry Closet in the Kitchen
- Upgraded Gas Furnace
- Due to continuous product development & improvement, prices, specifications & materials are subject to change w/out notice or obligation. **Note: Standard plan is 28x68(64)**

ATLANTIC Homes Essentials Collections

Construction

- 2x6 Floor Joists 16" O.C.
- 2x6 Sidewalls 16" O.C.
- 20 lb. Roof 24" O.C.
- 8' Sidewalls
- Flat Stomped Ceilings
- Foam Core Sheathing
- Marriage Line Gasket
- Soffit/Fascia/Drip Edge
- Vinyl Covered Drywall Throughout
- Molding to Match Cabinetry Throughout
- Double 4.5" Dutch Lap Vinyl Exterior Siding
- Louvered Panel Shutters - Front Door Side
- 3-Tab 25-Year Shingles with Ridge Vent
- Heat Tape Receptacle

Electric

- 100 Amp Electric Service
- Recessed Can Lights in Kitchen
- Globe Light at Kitchen Sink
- Tulip Light Bars in Bathrooms
- Switched Receptacles in Living Room and Bedrooms
- Globe Lights in Dining Room
- Exterior Jar Lights Rear
- Wire & Vent for Electric Dryer

Baths

- GFI Receptacle
- 60" Tub/Shower
- Dual Knob Faucets
- Towel Bar & Tissue Holders
- 36" Vanity Height
- Plastic Sinks
- Mirror at Vanity (s)
- Laminate Countertop/Edge & Backsplash
- Porcelain Toilet
- Curtain Rod at Tub

Kitchen

- 6" Stainless Steel Kitchen Sink
- 18 Cu Ft Refrigerator – White or Black
- 30" Deluxe Gas Range – White or Black
- Power Vent Range Hood
- GFI Receptacle
- Laminate Countertop/Edge & Backsplash
- Wood Cabinet Doors
- MDF Stiles
- Bank of Drawers
- Fixed Overhead Shelf
- Cabinet Cove on Overhead Cabinets

Plumbing & Heating

- Whole House Interior Water Shut-off
- Plumb for Washer
- In-Line Heat Ducts
- Gas Furnace with Thermostat
- 30-Gallon Electric Water Heater

Miscellaneous

- Combo Smoke/CO Detectors Per Code
- Carpet
- Carpet Pad
- Vinyl in Wet Areas
- 6-Panel White Interior Doors with Knobs
- Vented Shelves in Closets
- Wire Shelf over Washer/Dryer Area
- Mini Blinds if available due to supply shortage
- R-11 Floor Insulation
- R-19 Sidewall Insulation
- R-22 Roof Insulation
- 38"x 82" Sunburst Fiberglass Front Door (No Storm)
- 34" x 82" Cottage Rear Door (No Storm)
- Deadbolts on Exterior Doors (Keyed Alike)
- 36" x 60" and 30" x 36" Low-E Gridded Vinyl Windows
- Rod with Valance in Kitchen
- Choice of Decor

Due to continuous product development and improvement, prices, specifications, and materials are subject to change without notice or obligation. Square footage and other dimensions are approximate. Exterior images may be artist renderings and are not intended to be an accurate representation of the home. Renderings, photos and floor plans may be shown with optional features or third-party additions.